

HT-MiniMix Gas Engine Mixer

MiniMix Series

Features and Benefits

- Interchangeable Venturi Insert
- Precise Air Fuel Ratio Control
- For Natural Aspirated or Turbocharged Engines up to 150kW
- Integrated Design
- Sealing through O-Ring Design
- Lambda Probe or Pressure Map Control with Cuteline Series
- CAN Controlled



MiniMix a unique mixer

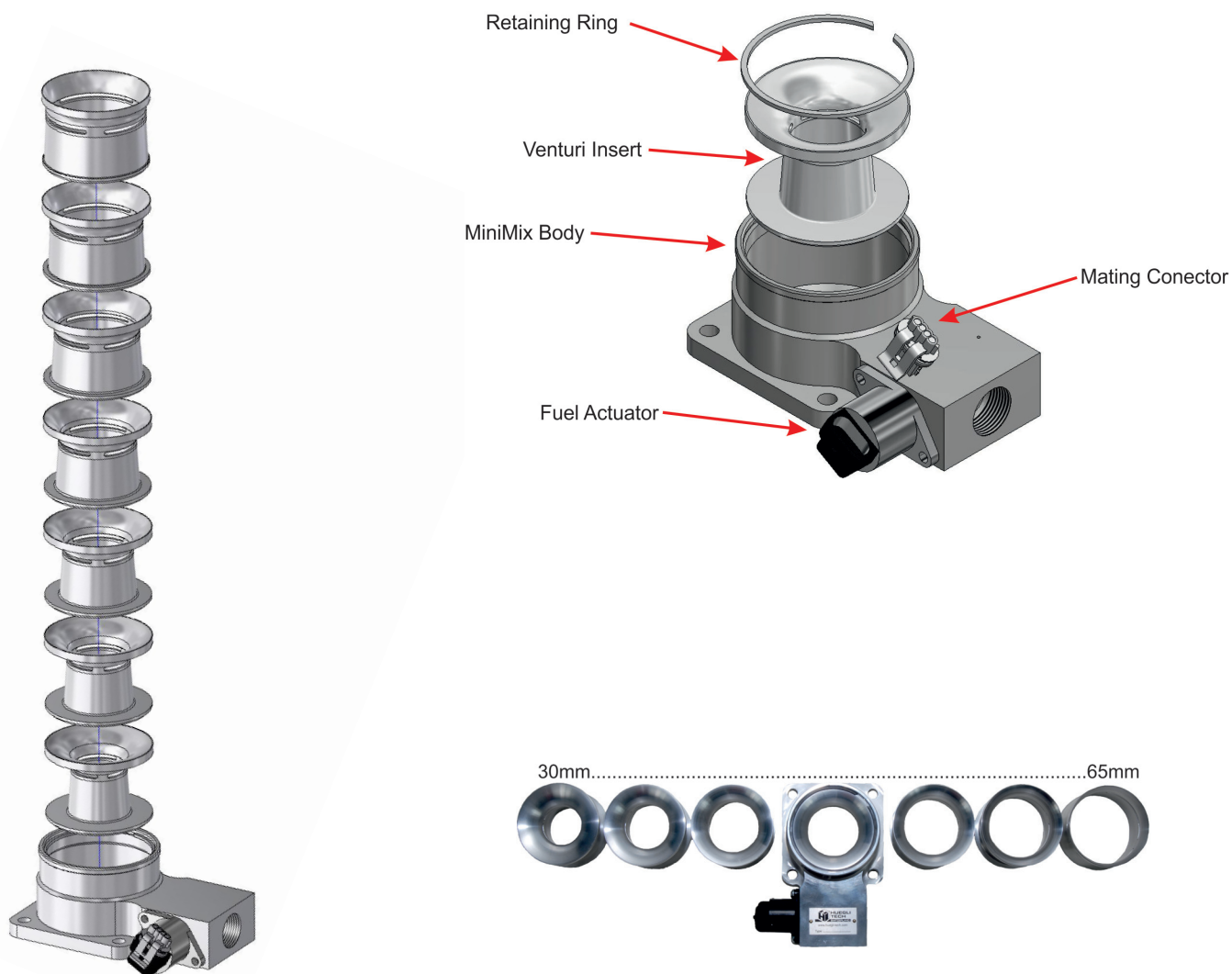
Huegli Tech present a modular system allowing the perfect gas mixer to suit engine size and power.

The MiniMix unit meters the amount of gas supplied to the engine and mixes this with the intake air. The metering unit is driven by a stepper motor. Huegli Tech offer two CuteLine modules that can provide the required stepper-motor input signal; HT-CL-AF1000-LS which works in combination with a wideband lambda sonde or HT-CL-1500P which uses the input from an inlet pressure sensor. The included software not only allows real-time adjustment of parameters during commissioning, but can configure the units to provide continuous CAN data to J1939-capable engine controllers.

Eight mixer venturis are currently available with internal diameters between 30 mm and 65 mm. These can be exchanged in the field if necessary. The MiniMix mounting flange has an O-ring groove and a high temperature O-ring.

Technical Specification

Mixer Assembly



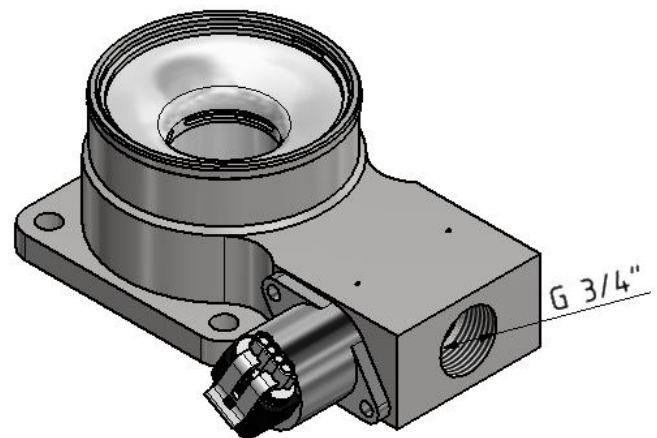
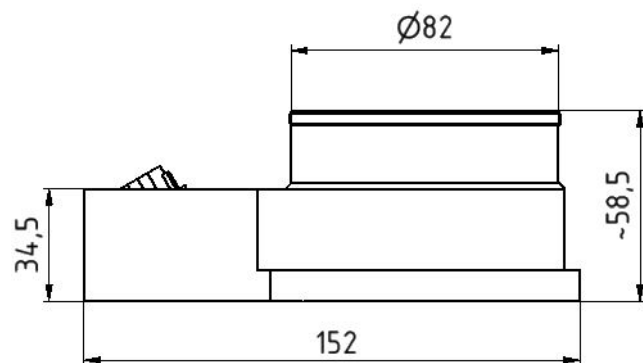
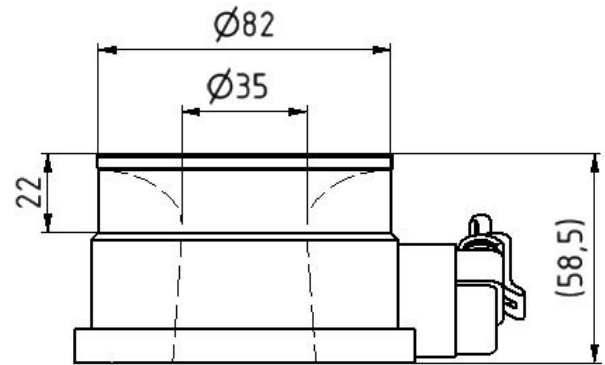
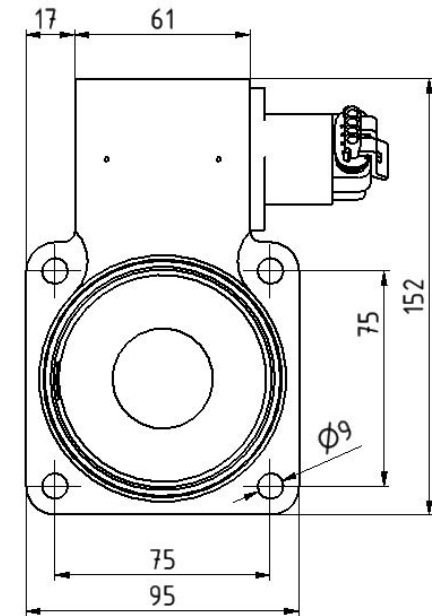
Selection of Venturi Insert Diameter:

| Venturi Diameter Insert available | Calculated Pressure drop / mbar | Airvolume m3/h | Airmass kg | KW |
|-----------------------------------|---------------------------------|----------------|------------|---------|
| Venturi 30 mm | 20 | 180 | 205 | 26-36 |
| Venturi 35 mm | 20 | 200 | 242 | 36-45 |
| Venturi 40 mm | 20 | 266 | 322 | 46-59 |
| Venturi 45 mm | 20 | 345 | 417 | 60-76 |
| Venturi 50 mm | 20 | 442 | 535 | 77-98 |
| Venturi 55 mm | 20 | 565 | 683 | 99-125 |
| Venturi 60 mm | 20 | 730 | 883 | 126-140 |
| Venturi 65 mm | 20 | 975 | 1180 | 140-160 |

HT-MiniMix Gas Engine Mixer

MiniMix Series

Dimensions:



HT-MiniMix Gas Engine Mixer

MiniMix Series

Order Number for MiniMix:

| Order Number | Venturi Diameter | HT-VNM Fuel Actuator | O-Ring |
|--------------|------------------|----------------------|----------|
| HT-MMX 30 | 30mm | Included | Included |
| HT-MMX 35 | 35mm | Included | Included |
| HT-MMX 40 | 40mm | Included | Included |
| HT-MMX 45 | 45mm | Included | Included |
| HT-MMX 50 | 50mm | Included | Included |
| HT-MMX 55 | 55mm | Included | Included |
| HT-MMX 60 | 60mm | Included | Included |
| HT-MMX 65 | 65mm | Included | Included |

Mating Harness for VNM Stepper Motor

CH-VZM-L4, Not included. If a different length is desired, please specify

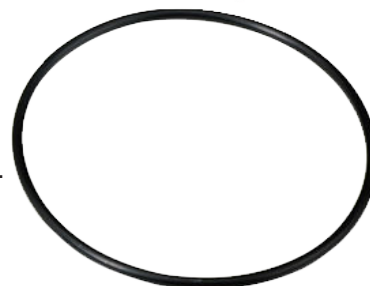
Wiring Harness and Spare Parts for MiniMix:

For mixer fuel actuator:

- CH-VZM-L4.....



- O-Ring-78X3



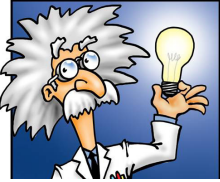
- HT-VZM-150302-M3 and HT-ZZM-19.8-R20.....



HT-MiniMix Gas Engine Mixer

For best performance, the experts recommend:

MiniMix Series



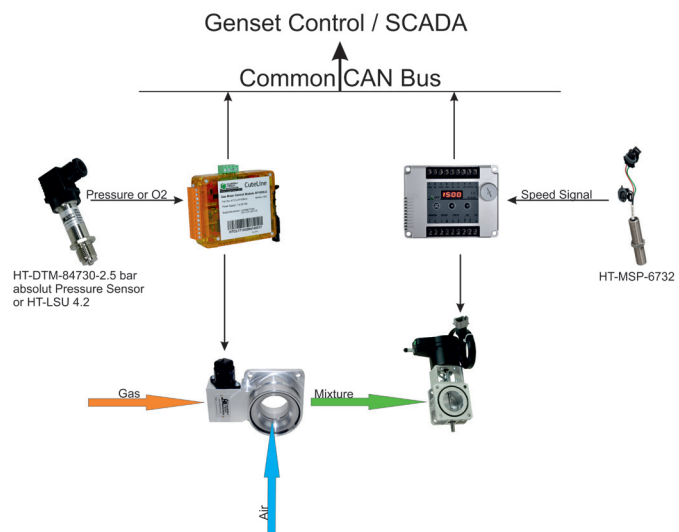
The closed loop together with Cuteline Lambda-controller

The Lambda Control in the closed loop consistin of:

- HT-CL-AF-1000LS or 1500P Lambdacontroller
- HT-DTM-8473 0-2.5bar Absolut Pressuresensor
- LSU 4.2 Lambdasensor

Wiring Harness

- CH-DTM-8473-L07
- CH-LSU-L07



Local Distributor / Partner:



HUEGLI TECH AG (LTD)
Murgenthalstrasse 30
4900 Langenthal Switzerland
Phone: +41 62 916 50 30
Fax: +41 62 916 50 35

e-mail: sales@huegli-tech.com
www.huegli-tech.com